



# CapiBook OS A1+

*Combining large format  
and productivity*



Digibook

*Heritage digitization*



# CopiBook Open System A1+

*Scanners with matrix sensors*

## *Automatic* Book cradle

Automatic glass opening and closing  
Motorized independent trays

✓ *Effortless scanning*

Secure pressure adjustment system

✓ *Document preservation*

Book thickness and weight: up to 20 cm thick  
without glass and up to 20 Kg

✓ *Adaptable to various document types*

## *Optimized* Lighting system

LED lighting **without UV and IR emissions**

✓ *Document preservation*

Light **diffuser**

✓ *No dazzling light for operators*



# — Outstanding Image quality

9 cm depth of field

✓ *Extended sharpness to capture every detail*

2 cameras available

✓ *Configurations to suit every need*



## EAGLE Camera

High resolution 300 dpi  
71 Mpixels  
BoostPic



## E-XTRA Camera

High resolution 400 dpi  
156 Mpixels  
BoostPic and TrueColor™



## BoostPic

Make the finest details

*Better sharpness / Lower-noise / Higher-contrast*



## High level of *productivity and ergonomics*

Scan time : <1s at 300 dpi

Cycle time : <4s at 300 dpi

✓ *Identical scan times for all formats*

Real-time preview

Automatic calibration

✓ *Saves time at every stage of digitization*

Book cradle **can be removed**

✓ *Allows the user to scan A1+*

## Scan Format

A1: Up to 844 x 598 (mm) / (33.2" x 23.5")  
with glass

A1+: Up to 1065 x 754 (mm) / (41.9" x 29.7")  
without book cradle



True to life color digitization

*No moiré pattern*

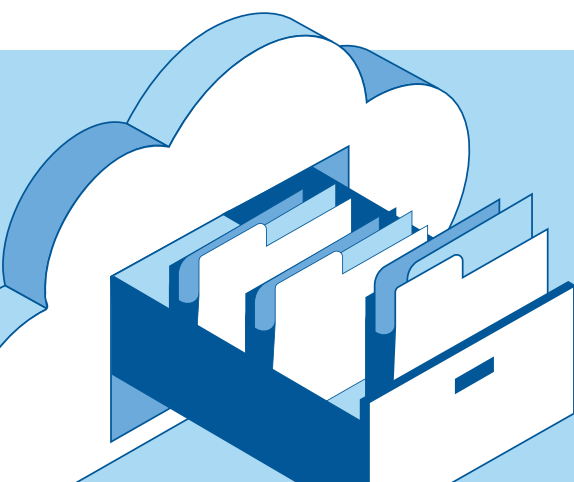
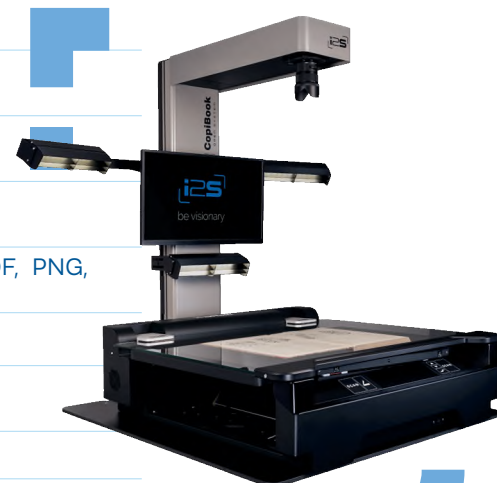




# CopiBook Open System A1+

## Technical specifications

TYPE	A1+ format planetary book scanner
CAMERA	Eagle with 71 MPixels matrix sensor, And E-xtra camera with 156 MPixels Autofocus No mechanical shutter Color, Grayscale, Black & White
OPTICAL RESOLUTION	300x300 dpi, 400x400 dpi Up to 800 dpi maximum resolution
SCAN TIME	< 1 sec at 300 dpi in color < 4 sec at 400 dpi in color
CYCLE TIME	< 5 sec at 300 dpi in color < 11 sec at 400 dpi in color
FILE FORMATS	TIFF, TIFF (multipage), JPEG, JPEG2000, BMP, PDF (multipage), PDF, PNG, DNG
SOFTWARE	Limb Capture software operated with Windows 10, 11.
DIMENSIONS (L X L X H)	Scanner with book cradle (BC) : 1245 mm x 1513 mm x 1405 mm / 49" x 59.6" x 55.3"
WEIGHT	Scanner : 80kgs / 176.4 lbs
POWER REQUIREMENTS	100V - 240V AC, 50/60 Hz
WARRANTY	1 year on spare parts and software updates (can be extended)
CERTIFICATIONS	CE/FCC part 15 compliant, Electrical safety low current EN 62368-1, Radio interference EN55032, EN61000-3-2, EN61000-3-3, Electromagnetic immunity EN 55024



The scanner is compatible with all digisolution software

## About Digibook



50 international  
partners



5000 scanners  
sold worldwide



+ 10 millions  
scanned pages per year



Digibook

28, rue Jean Perrin  
33600 Pessac, France  
[www.i2s-digibook.com](http://www.i2s-digibook.com)