



# REPROlab from A5 to A2

*Unmatched image quality  
affordable for all formats*



Digibook

*Heritage digitization*



# REPROlab from A5 to A2

*Reprographic system*

## Configurations *Two available*

### Configuration *CLASSIC*

Eagle camera

Lighting system adjustable in intensity

✓ *High image quality up to an optical resolution of 1200 dpi*

### Configuration *PROFESSIONAL*

Eagle and Rock camera

Lighting system adjustable in intensity with better uniformity

✓ *Outstanding image quality up to an optical resolution of 1800 dpi*

On both configurations:

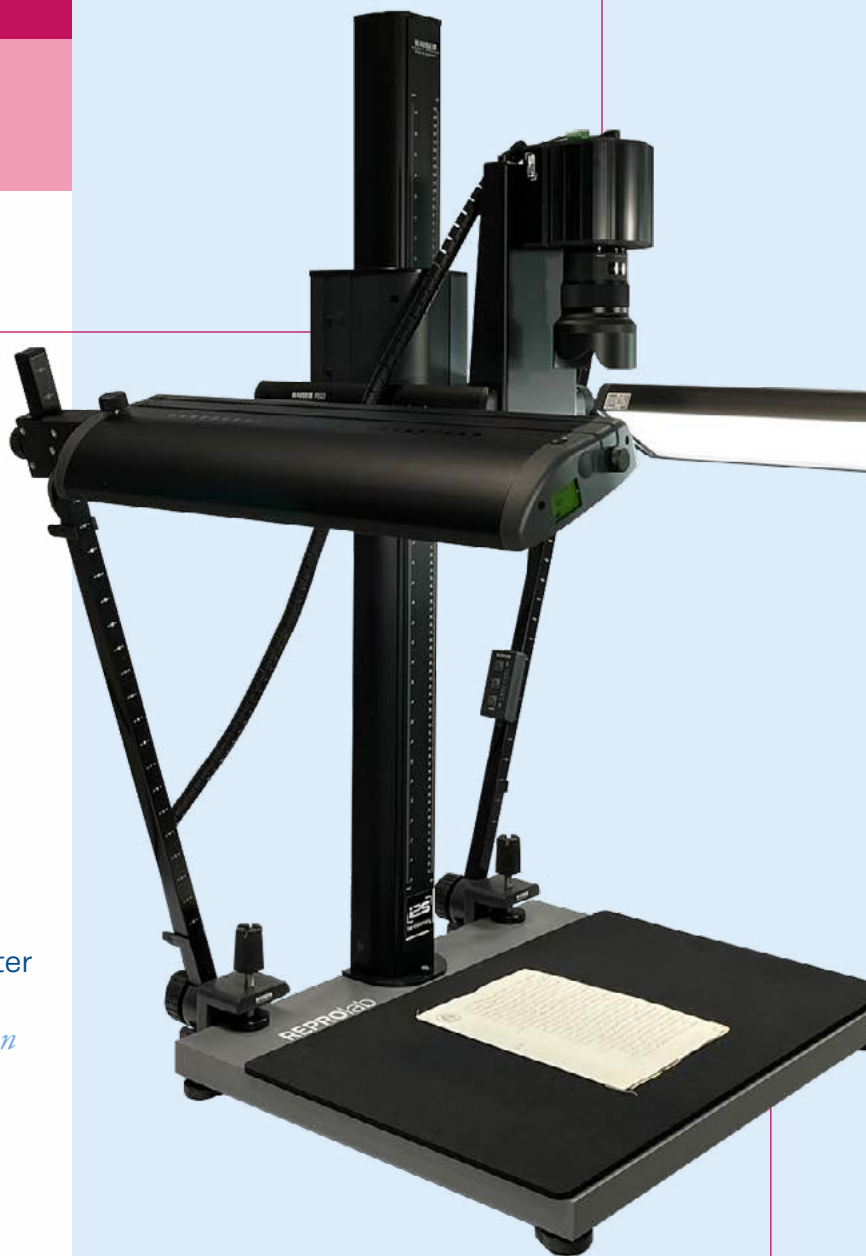
Motorized column

✓ *High level of versatility to digitize several types of documents at various optical resolution*

Format positions, color profiles and calibration adjustment parameters

Easy management of your settings

✓ *Enjoy all the benefits of the LIMB Capture interface*



## *Optimized* Lighting System

Professional **UV/IR free** lighting system

✓ *No damage to documents*

Color rendering index **>95** (for professional configuration)

✓ *Excellent color reproduction*

Adjustable lighting

✓ *Digitization of several types of documents*

# — The highest level *of image quality*

**9 cm** depth of field

✓ *Extended sharpness to capture every detail*

**2 cameras** available

✓ *Different configurations to suit every need*



## Camera Eagle

High resolution 400 dpi  
71 Mpixels  
BoostPic



## Camera Rock

High resolution 600 dpi  
156 Mpixels  
BoostPic and TrueColor™

REPROlab is compliant with **ISO 19264-1**,  
**Metamorfoze** and **FADGI** standards (Eagle and  
Rock cameras).



## Scan *Format*

**A2+:** 635 x 451 (mm) / (25" x 17.76")

**A3+:** 421 x 301 (mm) / (16.57" x 11.85")

**A4+:** 318 x 225 (mm) / (12.52" x 8.86")

**A5+:** 212 x 150 (mm) / (8.35" x 5.90")

## High level of *productivity and ergonomics*

**Scan time:** <1s at 400 dpi

**Cycle time:** <3s at 400 dpi

✓ *Unequalled productivity*

**Real-time** preview

Advanced functionalities: **autocrop** and **multi-saving frames**

✓ *Time saved at every stage of scanning process*

## BoostPic

Make the finest details visible

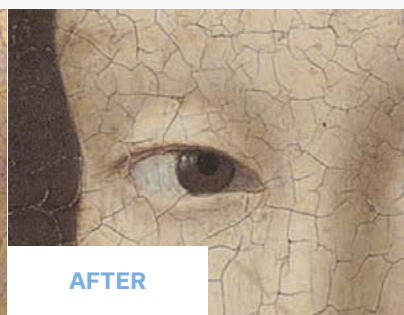
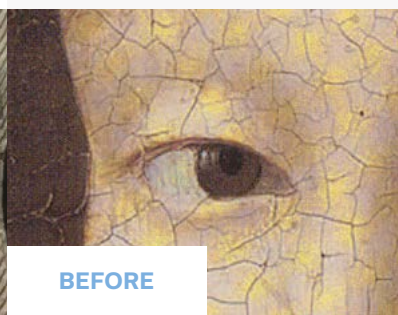
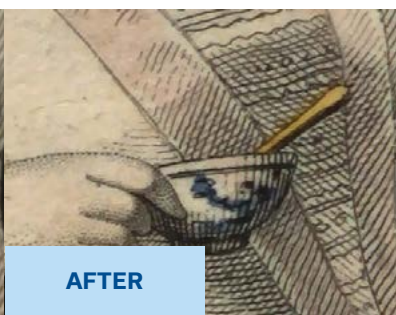
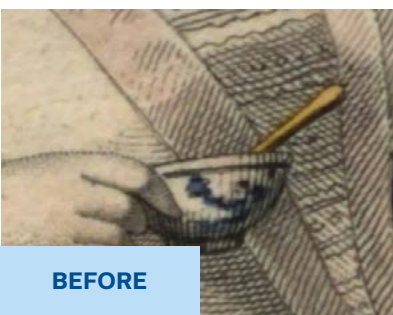
*Better sharpness / Lower-noise / Higher-contrast*



No moiré pattern

*True-to-life color digitization*

✓ *Meets the requirements of standards*



BEFORE

AFTER

BEFORE

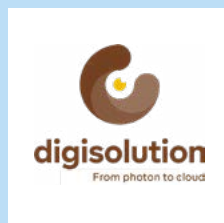
AFTER

# REPROlab

## From A5 to A2

### Technical specifications

TYPE	Reprographic stand – Stand alone camera	
CAMERA HEAD TYPE	<b>Classic configuration</b> EAGLE camera CMOS sensor 71 Mpixels (RGB) Motorized and automatic focus	<b>Professional configuration</b> ROCK camera (or EAGLE) CMOS sensor 156 Mpixels (RGB) Motorized and automatic focus
OPTICAL RESOLUTION	from 400 dpi on A2 format to 1200 dpi on A5 format	from 600 dpi on A2 format to 1800 dpi on A5 format
SCAN TIME	<3 sec in colour (A2+ format, 600x600 dpi optical)	
CYCLE TIME	<8 sec in colour (A2+ format, 600 dpi optical)	
SUPPORTED FILE FORMATS	TIFF (multipage), JPEG, JPEG2000, BMP, PDF (multipage), PNG, DNG	
LED LIGHTING SYSTEM	Lights can be swiveled, adjusted in height Power consumption 2 x 27W CRI>93	Lights can be swiveled, adjusted in height and shifted horizontally Power consumption 2 x ≤40W CRI>95
SOFTWARE	Limb Capture software operated with Windows 10, 11.	
DIMENSIONS	Base board (LxIxH): 68 x 57 x 3.8 cm / 26.8" x 22.4" x 1.5" Column: 127cm (50 in")	
WEIGHT	53 kg (116.53 lbs)	
POWER SUPPLY	100V – 240V AC, 50/60 Hz	
WARRANTY	1 year on spare parts and software updates (can be extended)	



REPROlab is compliant with all digisolution software

## About Digibook



50 international  
partners



5000 scanners  
sold worldwide



+ 10 million of pages  
scanned per year



Digibook

28, rue Jean Perrin  
33600 Pessac, France  
[www.i2s-digibook.fr](http://www.i2s-digibook.fr)